



*Stake Your Claim*

**Celebrate heritage and culture  
in a growing arts city!**

**Visit  Enid.org**  
580.233.3643



**Travel  
OKLAHOMA**  
TravelOK.com

# EXPLORE OKLAHOMA HISTORY

PERMANENT & TEMPORARY EXHIBITS  
LIVING HISTORY VILLAGE  
RESEARCH CENTER  
ANNUAL EVENTS  
SPECIAL PROGRAMS  
WORKSHOPS



*Welcome!*

## TABLE OF CONTENTS

Adventure: Enid's top annual events .....	4-7
Delight: Enid's most shareable photo locations .....	8-11
Imagination: Enid's performing, visual & hands-on arts .....	12-15
Heritage: Enid's proud history on display .....	16-19
Deliciousness: Enid's unique dining destinations .....	20-23
City Map .....	24-25
Downtown Map .....	26
Enid Map Listings .....	27
Shopaholic: Great deals found only in Enid .....	28-31
Lodging .....	32-33
Restaurants .....	36-39
Things To Do .....	40-46
- Arts & Culture .....	40-42
- Entertainment .....	43-44
- Recreation .....	44-46

While every reasonable effort has been made to ensure the accuracy of the information contained within this travel guide, no responsibility will be assumed by Visit Enid or its associates for errors or omissions. All information provided herein is subject to change without notice.

25,000 copies produced, printed and delivered at an approximate cost of \$0.40 per copy. This guide is produced in cooperation with the Oklahoma Tourism & Recreation Department. For more Oklahoma travel information, call 800.652.6552 or visit [TravelOK.com](http://TravelOK.com). For travel information specific to northwest and north-central Oklahoma, visit [RedCarpetCountry.com](http://RedCarpetCountry.com).





# Adventure

Let it stoke your spirit

## ◀ Enid's top annual events

### ENID COMIC CON

This family-friendly event includes open gaming, video games, board games, Cosplay contests for adults and children, Pokemon, D&D and more. **August**

### NJCAA DIV II WORLD SERIES

Baseball teams in Division II of the National Junior College Athletic Association play all season to become one of 10 teams to travel the Road to Enid to compete for a World Series championship. **May**

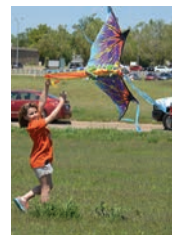


### HOLIDAYS ON ICE IN DOWNTOWN ENID

What's better than ice skating outdoors during the holiday season? The Stride Bank Center parking lot is transformed into an enchanted holiday experience for all ages. **November-January**

### KITES OVER ENID

April is National Kite Month and what better way to celebrate than by flying a kite at Kites Over Enid. Professional kite flying teams come to provide demonstrations and they may even put one of their airborne kites into your hands. **April**



Cover Photo: Under Her Wing was the Universe, completed in 2020 by artist Romy Owens, is a sculptural pavilion that shelters visitors and invites them to escape into daydreams and possibilities. This unique sculpture adds to Enid's ever-growing arts and culture scene. Photo by Patrick Wine.

### TOMBSTONE TALES

Take a wagon ride through Enid Cemetery on a moonlit Oklahoma evening and enjoy re-enactment characters portraying historic personalities who once lived in the Enid area. **October**

### CHRISTMAS IN THE PARK

Meadowlake Park becomes a Christmas wonderland each Saturday night during the holiday season. Kids can write and mail their letters to Santa, ride the Kiwanis train and other rides, there's cookie decoration and ornament making stations, and get your picture taken with Santa. **December**



### SUMMER CHAUTAUQUA

Meet some of history's most illustrious characters. Historical enactments include a monologue "in character" and an opportunity to pose questions to both the visiting luminary and the scholar/presenter. The 2021 theme is "20th Century Visionaries: Catalysts for Change." **June**

### SHAKESPEARE IN THE PARK

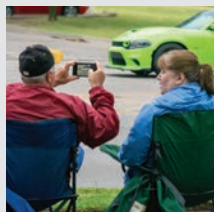
This year marks the 27th anniversary of Gaslight Theatre bringing this Shakespeare event to Government Springs Park North free of charge, with a different comedy, history or tragedy each year. Bring a lawn chair or blanket and enjoy this year's show, "Julius Caesar," under the stars. **June**



*Search the continuously updated events calendar at [VisitEnid.org](http://VisitEnid.org) for more great Enid events.*

### CHRISTMAS IN THE VILLAGE

Escape to a simpler time and experience Christmas in the Cherokee Outlet as it was over 100 years ago with the sights, smells and sounds of the holiday season. **December**



### VAN BUREN CRUISERS

Roll into the Van Buren Cruisers cruise nights held annually over Father's Day weekend and cruise Van Buren. Show off your car or bring a lawn chair and watch the cars go by. Don't miss the Car Show on Saturday night. **June**

### MENNONITE RELIEF SALE

Find handmade and homemade items including quilts, artwork, crafted woodwork, household goods and several varied food items at this popular annual event, one of only 46 relief sales held in the United States. **November**

### ENID LIGHTS UP THE PLAINS

The downtown Christmas lights come on and holiday music fills the air the night after Thanksgiving. Enjoy the Christmas Lights Parade, Christmas cutouts, horse-drawn wagon rides and a fireworks display. **November**

### CORVETTE EXPO

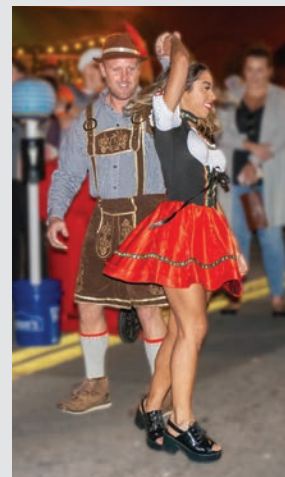
Perhaps the "coolest" car of them all, Chevrolet has manufactured seven generations of Corvettes. Come to the largest indoor Corvette show in Oklahoma where you can get up close to all these beautiful sports cars. **April**

### FIRST FRIDAY

Shopping, dining and live entertainment makes the Downtown Square your after-hours destination. Visit the First Friday Enid page on Facebook for a complete listing of events. **April-October**

### RED BRICK ROAD FOOD TRUCK AND ART FESTIVAL

Exhibits from area artisans including painters, photographers, potters, sculptors and more, a variety of food trucks and live music throughout the event makes the day fun for the entire family. **March**







## ◀ Enid's most shareable photo locations

### GOVERNMENT SPRINGS PARK NORTH

You'll find many picturesque settings popular at any time of the year. Dillingham Garden has many varieties of flowers, plants and native grasses that thrive in the Oklahoma sun. See yourself on the arched bridge over the lake, next to Chisholm Trail cowboy and cattle cutouts or under the gazebo with a fountain and waterfall as your background.

### SIMPSON'S OLD TIME MUSEUM

Enter Enid's old Western movie studio, Skeleton Creek Productions, home to six full length, family-friendly Western movies and take your picture in the old saloon, church, hotel lobby or bank. You may get thrown into the old West jail if Stormy Lane or Texas Clapsaddle suspect you are part of a band of outlaws invading Enid.

### MEADOWLAKE PARK

Enid's Meadowlake Park provides photo opportunities for everyone. All aboard the Kiwanis Train for a locomotive tour of the park. Ride on a classic wooden carousel or find a great view atop the Ferris wheel.

### LEONARDO'S CHILDREN'S MUSEUM

The second floor is a child's version of Enid, where kids can become a dentist or doctor and shop at the grocery store. Laying on the bed of nails is a photo-must, as is the giant Lite Brite, the two-story Power Tower, Critter Clubhouse, Tinkering and Adventure Quest, the world's largest outdoor community-built playground.





### EAST MAINE BRIDGE

What other city has a bridge with its own Facebook page? This railroad bridge built in 1908 has a low clearance of 11 feet, 4 inches. Despite flashing lights, warning signs and jaws painted on each side, inattentive truck drivers see their trucks gobbled up as they attempt to enter or exit downtown Enid on East Maine St. The Facebook page is The East Maine Bridge.

### HUMPHREY HERITAGE VILLAGE

Four historic buildings stand at Humphrey Heritage Village, part of the Cherokee Strip Regional Heritage Center. The showcase is the U.S. Land Office that stood in Enid during the Cherokee Strip Land Run of 1893, the only land office remaining from any of the seven Oklahoma land runs. You will also find a 1902 church, a 1905 Victorian home and an 1895 one-room schoolhouse.



### PRO SPORTS IN ENID

The state's only professional indoor football team, the Oklahoma Flying Aces, are joined by the Enid Outlaws of The Basketball League, in bringing high-caliber excitement to the Stride Bank Center.

### HOLIDAYS ON ICE IN DOWNTOWN ENID

Head to downtown Enid for an unforgettable winter experience. This outdoor ice rink with REAL ice gives you a chance to create some magical memories. Rink is open mid-November through early January. #HolidaysInEnid



### UNDER HER WING WAS THE UNIVERSE

The walkway through this unique piece of abstract art glitters during the day, and the sculpture is equipped with 1,152 "stars" that twinkle at night, inviting visitors to escape into daydreams and possibility.

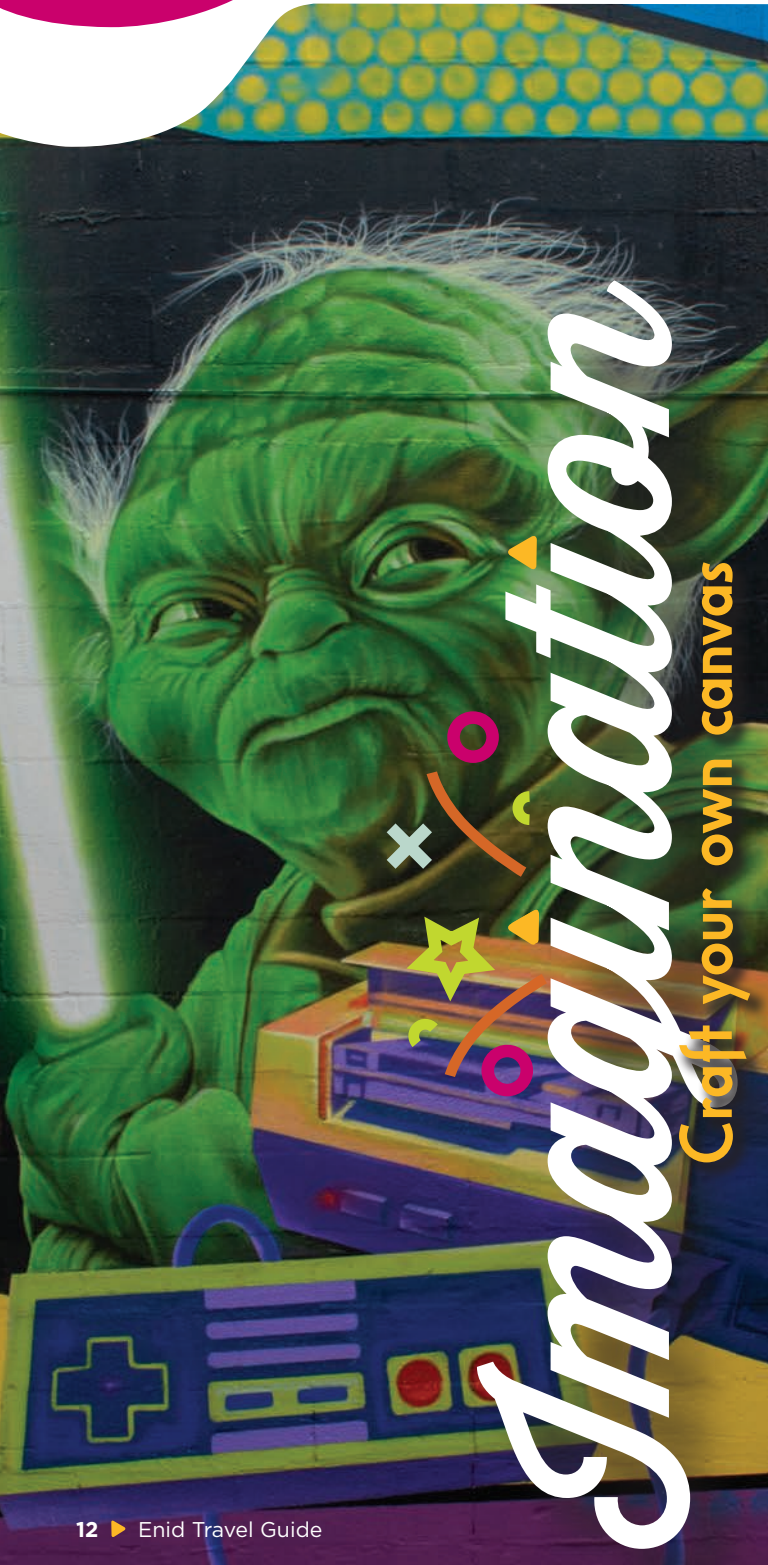


### ENID WELCOME CENTER

Kids and adults both enjoy having their pictures taken at the Welcome Center. Meet Prairie Thunder, the beautiful painted bison that greets you as you enter, or get a shot of the Chisholm Trail marker made by Enid native Bob Klemme. There are over 400 of these placed everywhere a section line crosses the historic Chisholm Trail in Oklahoma.







## ◀ Enid's performing, visual and hands-on arts

### PUBLIC ART

From our proud heritage to our vibrant future, the unique art sculptures and murals found throughout Enid cater to all artistic styles. See Pages 25 & 27 for lists of Enid's public art.





### SKELTON CREEK PRODUCTIONS

Be careful, the marshal may throw suspicious-looking varmints into the Old West jail, one of nine movie sets inside Simpson's Old Time Museum Groups can inquire about making their own Old West micro-movie.



### ENID SYMPHONY ORCHESTRA

Step back in time to 18th-century Paris when you enjoy concerts from national and international artists in a visually-stunning symphony hall. Founded in 1905, ESO is two years older than Oklahoma.



Photo courtesy of Muncy Photography

### GASLIGHT THEATRE

As one of Oklahoma's longest-running community theatres, Gaslight has produced high quality comedies, dramas and musicals for over 50 years. Its intimate setting means there's not a bad seat in the house.

### ARTS & ENTERTAINMENT DISTRICT

Enid's downtown is one of only seven Certified Cultural Districts in Oklahoma. Home to First Friday with live music, artist displays and more the first Friday of each month April-October.

**LEONARDO'S CHILDREN'S MUSEUM** Children love the two-story Power Tower, a mini Enid featuring shopping at a grocery store, playing doctor and dentist, painting in an art studio, and Adventure Quest, the world's largest outdoor community-built castle.



# DOWNTOWN ENID

Shop, dine & be entertained  
at almost 60 locations!



PARK AVENUE  
THRIFT

**Park Avenue Thrift**

507 S Grand  
580-233-7275



garfield  
FURNITURE

**Garfield Furniture**

205 S Grand Ave  
580-237-5032



GASLIGHT  
theatre

**Gaslight Theatre**

www.GaslightTheatre.org  
580-234-2307



Return  
Engagement

**Return Engagement**

123 N Grand  
580-234-0624

First Fridays • Downtown Dogfest  
Oktoberfest • Enid Lights Up the Plains

See ALL locations and events at

**Main Street Enid.org**





## ◀ Enid's proud history on display

### CHEROKEE STRIP REGIONAL HERITAGE CENTER

Travel back to a hot, dusty September day in 1893 and see how over 100,000 pioneers raced for 40,000 plots of land in the Cherokee Strip Land Run. Then step inside the only remaining US Land Office and stake your claim.

### VANCE AFB AIR PARK

Outside the Main Gate are static displays of aircraft used as pilot trainers at Vance from 1941 to today, everything from the Vultee BT-13 "Vibrator" to the T-38 Northrop "Talon."



### LITERARY LANDMARK

Two-time Pulitzer Prize-winning author Marquis James came to Enid as a small child during the Cherokee Strip Land Run. His works are honored at the Enid Public Library, which became the 12th Literary Landmark location in Oklahoma in 2016.

### JOHN WILKES BOOTH CONSPIRACY

Step into the old Grand Hotel (now Garfield Furniture) and decide for yourself. Was John Wilkes Booth captured and killed two weeks after the Lincoln Assassination in 1865, or did he die by his own hand in Enid 38 years later under the name David E George?

### RAILROAD MUSEUM OF OKLAHOMA

Step into the fenced-in rail yard and explore cabooses, engines, a dining car and more. Inside, watch an elaborate model train set larger than your living room, and see the world's largest collection of dining car china.

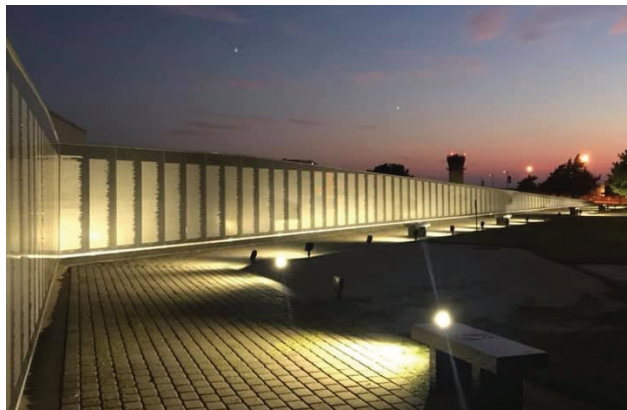


# Heritage

Evoke your senses

### WOODRING WALL OF HONOR

An 80-percent replica of the Vietnam Veterans Memorial Wall has a permanent home at Woodring Regional Airport and is Oklahoma's official Vietnam War Memorial.



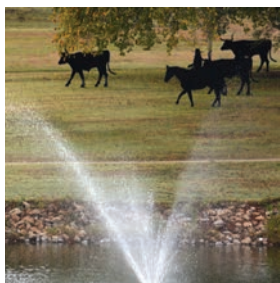
### ML BECKER LEARNING CENTER

Across from the Vietnam Veterans Memorial is a collection of permanent and temporary exhibits of patriotic, military and war related memorabilia.



### GOVERNMENT SPRINGS PARK NORTH

Before this became one of Enid's most popular city parks, the natural spring-fed pond served as a popular watering hole for cattle and the cowboys traversing the Chisholm Trail.



### NATIONAL REGISTER OF HISTORIC PLACES

As of publication, Enid has 26 locations on the National Register, including the Kenwood and Waverley Historic Districts, Enid's first two neighborhoods. The complete list can be found at VisitEnid.org.



[580] 297-5060 • 3710 W. Owen K Garriott Road

Join Us!

Monday-Saturday 11 am -10 pm

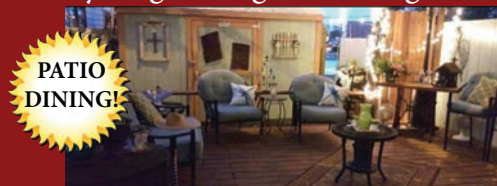
Happy Hour 4 pm -7 pm Mon. - Thurs.

Steaks • Wine • Cocktails

LandRunSteakhouseOfEnid.com

### MEALS TO GO

By Angel Delight Catering, LLC.



Great Home-Made Meals & Desserts  
Delivery Available - Catering Available

Complete Weekly Meal Plan  
**10% OFF**

Free Dessert  
w/ Meal Purchase



Like us on Facebook for weekly specials & upcoming events!

417 S. Washington, Enid, OK 580-542-2639



Retha Joslin, Owner - Est. 2004







# Delicious

Savor your servings

## ◀ Enid's unique dining destinations

### ENID BREWING COMPANY & EATERY

Enid's first brewery not only offers great "grain to glass" beers including the Oklahoma Controlled Burn, they also feature a full menu of mouth-watering bar food, and a delicious brunch on the weekends. Don't miss Trivia Night on Thursdays and live music on the weekends.



Comfort, warmth and elegant Old World charm are all around at **NAPOLI'S ITALIAN RESTAURANT**. You'll find traditional Italian favorites and original specialty dishes, a full bar and inside or patio seating, all in a family-friendly atmosphere.

### LAND RUN STEAKHOUSE

Enid's hometown steakhouse. A go-to place for excellent steaks, seafood and appetizers with a full bar and fantastic service. And leave room for dessert, whether it's Death by Chocolate or Bananas Foster, served flaming table-side in a rich, buttery caramel and amaretto sauce.



FAMILY-FRIENDLY, CRAFT BEER, WINE & CIDER, NON-ALCOHOLIC BEVERAGES, FOOD

Step inside **CALLAHAN'S PUB & GRILLE** and step into a lively Irish pub. The food has a British fare, including Shepherd's Pie, the Donar Kebab or their signature Fish & Chips. The full bar includes nearly 60 different beer selections. Choose indoor or patio seating. Must be 21 to enter.



Breakfast or lunch at the **WEE TOO** is comfort food at its finest. Staff wear t-shirts that say Home of the Garbage Omelet, which is ham, sausage, bacon, green peppers, onions, diced tomatoes and cheese all wrapped into three light, fluffy eggs.

**KATY'S PANTRY**

has made kitchens obsolete for over 35 years! Using tried and true family recipes, Katy's serves soups, salads, sandwiches, pastries and great pies. But they are known far and wide for their infamous sugar cookies enjoyed by customers as far away as Paris and Munich.



**COSTELLO'S CONTINENTAL CUISINE** owners Edmund & Catherine Costello love good food and good wine. That's the basis for their sophisticated menu items including steaks, seafood, Grilled Duck, and Rack of Lamb. Their vast wine selection spans the globe.



**SETTLERS BREWING COMPANY**

Enid's newest brewery sits right on the old Chisholm Trail, hence the name Settlers. This family-run brewery offers hand-crafted beers of all varieties. Enjoy your favorite beverage inside or on the patio listening to live music almost every weekend.



**THE PASTRY NOOK BAKERY & BISTRO**

Fresh-made salads, soups & quiche along with the best quality, homemade baked goods and treats. Check their Facebook page for daily specials.

**FIVE80 COFFEEHOUSE**

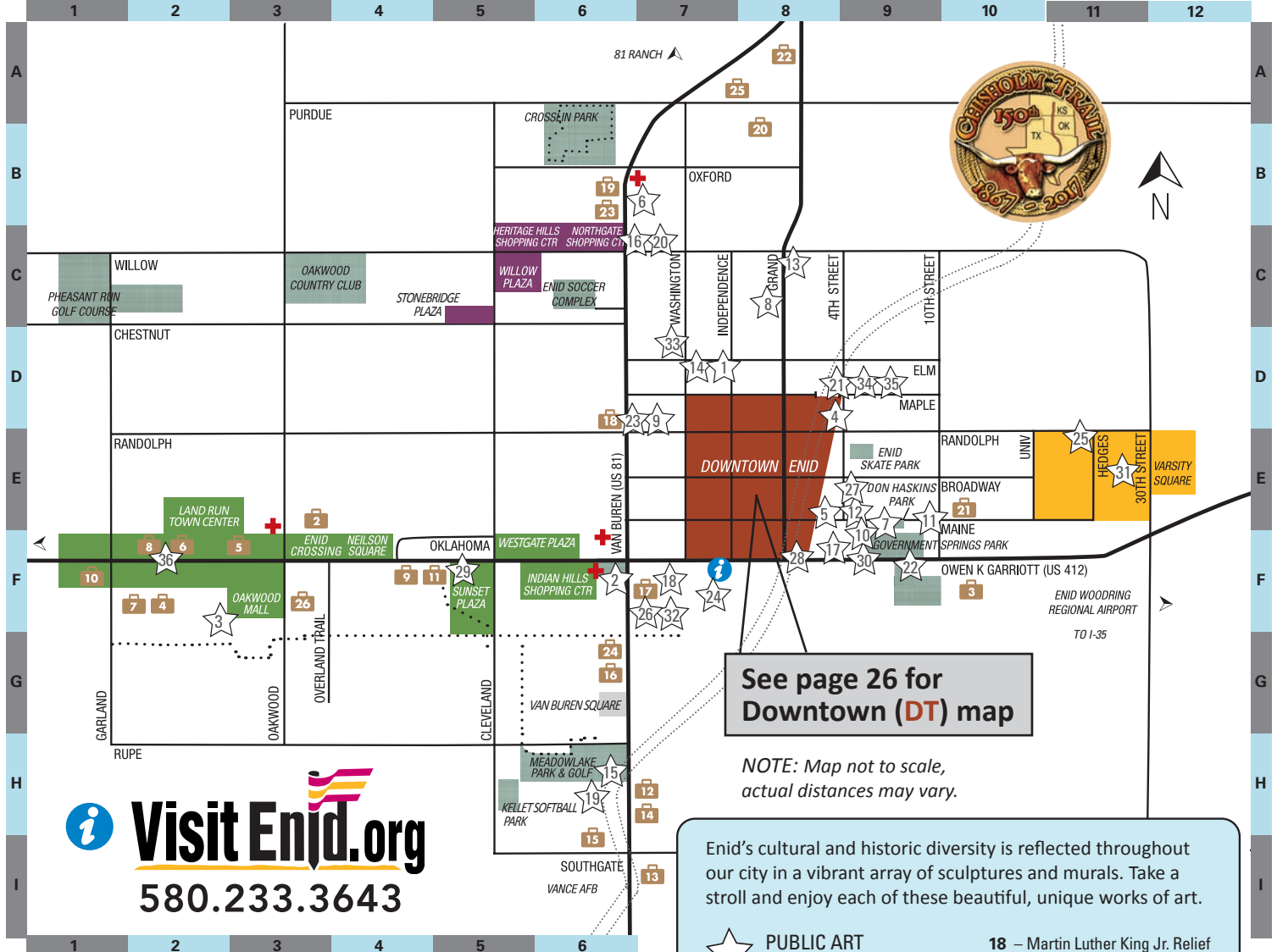
A non-profit coffeehouse that donates proceeds to several local charities, featuring suggested prices on all their hot and cold drinks, soups and sandwiches.

**ON THE SIDEWALK BAR & GRILL**

Enjoy their innovative Italian and Mediterranean cuisine and full bar indoors or their outdoor patio "on the sidewalk." Reservations are suggested Friday and Saturday evenings.

















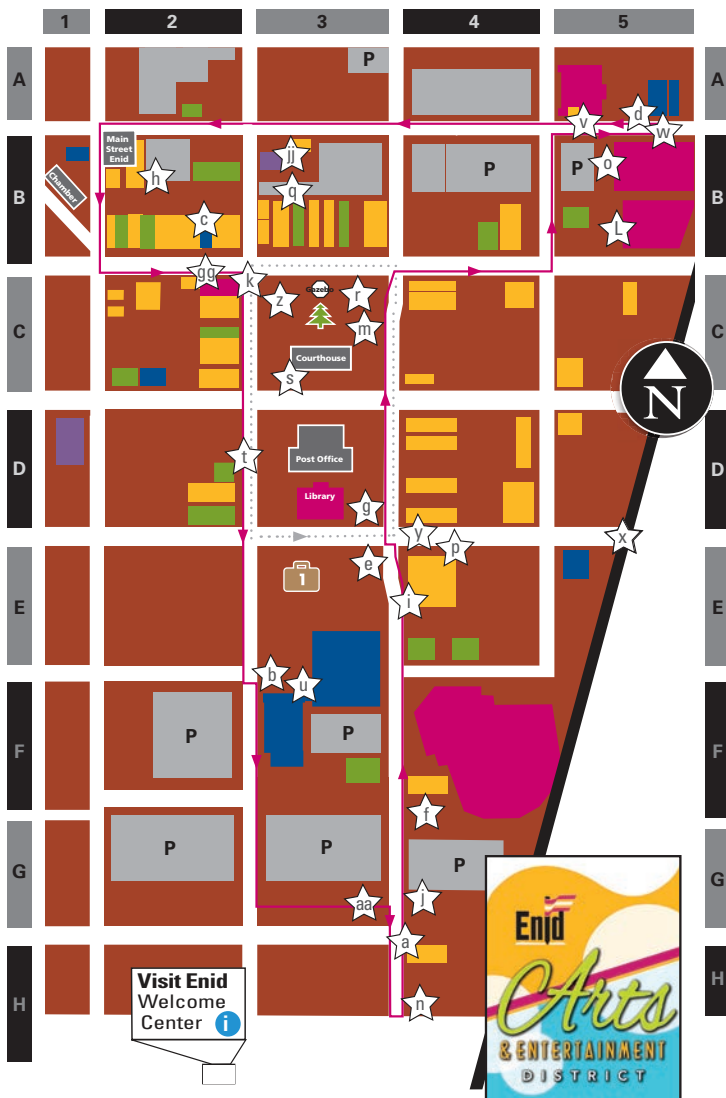


 **Visit Enid.org**  
**580.233.3643**

## Enid Map Legend

-  Numbered Locations
-  Minor Emergency
-  West Garriott District
-  Downtown District
-  Varsity District
-  Northwest District
-  Outdoor Sports/ Recreation Facilities
-  Public Art (see legend on the right)
-  Lodging
-  Enid Recreation Trail
-  Chisholm Trail
-  Enid Welcome Center

-  **PUBLIC ART THROUGHOUT ENID**
- |  |                                    |
|--|------------------------------------|
| 1 – 80s Pop Culture                    | 18 – Martin Luther King Jr. Relief |
| 2 – Centennial Clock                   | 19 – Meadowlake Train Tunnel       |
| 3 – Cowboys & Indians, Trains & Plains | 20 – New Day on the Old Trail      |
| 4 – David's Doodles                    | 21 – Oklahoma Phoenix              |
| 5 – East Maine Bridge                  | 22 – On the Chisholm Trail         |
| 6 – E.N. Puckett Memorial              | 23 – Play Takes Flight             |
| 7 – Feeding our Neighbors              | 24 – Prairie Thunder               |
| 8 – Flanders Flowers                   | 25 – Spheres                       |
| 9 – Girl of Peace                      | 26 – Spring                        |
| 10 – Giving Thanks                     | 27 – Spinning Wheel                |
| 11 – Holding the Claim                 | 28 – Sunset Postcard               |
| 12 – Indian Blanket Flower Mural       | 29 – Thank You Lord                |
| 13 – Jeans n Roses                     | 30 – The Homesteaders              |
| 14 – Jim Morrison                      | 31 – The Ranger                    |
| 15 – Kiwanis Train Station             | 32 – Vision Seeker                 |
| 16 – Legends                           | 33 – Watermelon Boxcar             |
| 17 – Mandala Colorwheel                | 34 – What the Eye Sees             |
|  | 35 – Where Your Garden Grows       |
|  | 36 – You Can                       |



## Enid Map Listings

- |  |   |
|--|---|
| 4RKids Mini Golf – F3                          | Meadowlake Park – H6                                |
| Champlin Park – F6                             | Meadowlake Golf Course                              |
| Champlin Pool – E7                             | Meadowlake Mini Golf                                |
| Cherokee Strip Regional Heritage Center – F9   | Meadowlake Disc Golf                                |
| Chisholm Trail Expo Center – A7                | Midgley Museum – F6                                 |
| Crosslin Park – A6                             | Nightmare Warehouse – D7                            |
| David Allen Memorial Ballpark – <b>DT</b> F4   | NOC Mackie Planetarium – E11                        |
| Don Haskins Park – E9                          | NWOSU Disc Golf – E11                               |
| Enid Recreational Trail – G2-G7                | Oakwood Bowl – F2                                   |
| Enid Skate Park – E9                           | Oakwood Country Club – C3                           |
| Enid Soccer Complex – C6                       | Pheasant Run Golf Course – C1                       |
| Enid Symphony Center – <b>DT</b> D1            | Railroad Museum of Oklahoma – D7                    |
| Enid Welcome Center – F7, <b>DT</b> H2         | Ruth Monro Augur Murals – <b>DT</b> C3              |
| Gaslight Theatre – <b>DT</b> B3                | Selby Stadium – G7                                  |
| Government Springs Park North – F9             | Simpson's/Skeleton Creek Productions – <b>DT</b> B5 |
| Holden Art Gallery – <b>DT</b> C2              | Skatetown – G4                                      |
| Indian Creek Village (Ringwood) – F1           | Splash Pads: Champion – E4                          |
| John Wilkes Booth Conspiracy – <b>DT</b> E4    | Splash Pads: Hoover – D9                            |
| Kellet Park – H5                               | Stride Bank Center – <b>DT</b> F3                   |
| Literary Landmark Marquis James – <b>DT</b> D3 | Tennis Courts: Crosslin Park – A6                   |
| Leonardo's Children's Museum – <b>DT</b> A5    | Tennis Courts: Don Haskins Park – E9                |
| Mabee Center – E11                             | Tennis/Pickleball Courts – F9                       |
|  | Vance AFB Visitors Center – I6                      |
|  | Woodring Wall of Honor – E12                        |



## Downtown (DT) Map Legend

- |                        |  |
|------------------------|--|
| Performing Arts        | <b>P</b> Parking                                   |
| Restaurants            | ..... Downtown Square Walk<br>(.50 miles distance) |
| Entertainment & Events | Art Walk<br>(2.0 miles distance)                   |
| Family Fun             | Public Art<br>(see legend on the right)            |
| Retail                 | Enid Welcome Center                                |



### PUBLIC ART DOWNTOWN

- |  |   |
|--|---|
| <b>a</b> – Blooming Buddy Bison            | <b>m</b> – Keeper of the Plains             |
| <b>b</b> – Boomer                          | <b>n</b> – Lazy Circles in the Sky          |
| <b>c</b> – Breezeway Mini Murals           | <b>o</b> – Leonardo's Gate                  |
| <b>d</b> – Bright Future                   | <b>p</b> – Owl Cigar                        |
| <b>e</b> – Bronze Lions on Watering Trough | <b>q</b> – Painted Plains                   |
| <b>f</b> – Butterfly Project               | <b>r</b> – Pioneers: Past, Present, Future  |
| <b>g</b> – Doughboy                        | <b>s</b> – Ruth Monro Augur Murals          |
| <b>gg</b> – Downspout Lookout Silhouette   | <b>t</b> – Sidewalk Musical Instruments     |
| <b>h</b> – Dragonfly in Paradise           | <b>u</b> – Sparky the Fire Dog              |
| <b>i</b> – Enid Woman                      | <b>v</b> – Stairway Science Mural           |
| <b>j</b> – God Bless America               | <b>w</b> – The Breeze                       |
| <b>jj</b> – Gray's Courtyard Mural         | <b>x</b> – The East Maine Bridge            |
| <b>k</b> – Holden Art Gallery              | <b>y</b> – The Trail                        |
| <b>L</b> – Indian Territory                | <b>z</b> – Tri-State Statue                 |
|  | <b>aa</b> – Under Her Wing was the Universe |





## ◀ Great deals found only in Enid

.....

**THE FELT BIRD** is a fun little shop in downtown Enid with an eclectic mix of gifts, accessories, and apparel. The goal of the Felt Bird is to provide a fun shopping experience, in a great setting, with the best service possible. They hand pick each item and choose it based on functionality, design and giggle factor.

**RAZZMATAZZ** in Heritage Hills Shopping Center is a fun place to go and have friendly people help you look your best. Ladies' fashions include bright colors, fun patterns and wardrobe staples in the latest clothing styles. They also offer a full line of Brighton jewelry and accessories, allowing you to mix and match to update and express yourself.

**PUTNAM SIX BOOKSTORE** in Sunset Plaza is a bookstore dedicated to the community. They feature New York Times bestsellers, prizewinners, a special Oklahoma authors section, a fabulous children's section and buzz-worthy must reads, including specially-marked "staff picks."



**GARFIELD FURNITURE** in downtown Enid has served this area since 1922. Whether you're just starting out or need a whole room makeover, they provide no-hassle shopping and an awesome selection of living room, dining room, bedroom, kids room and home office furniture. Oh, make sure you ask Russ or Josh about John Wilkes Booth while you're there.



**BOHO TEEPEE** on Enid's downtown square specializes in women's and children's clothing with many unique and adorable accessory items to choose from.



### RED BIRD FARM

Cut your own Christmas tree during the winter, pick your own blackberries in the summer and shop in the red barn during their many special events you'll find on their Facebook page, like Harvest Market in October.



**SUNDANCE WINE & SPIRITS** in Heritage Hills Shopping Center is a friendly, locally-owned liquor store. The staff shares its great knowledge with customers, ensuring you get the best choice of their large selection of wines, spirits and beers for your budget.

Take a piece of Enid home with you when you stop by the **ENID WELCOME CENTER**. Find t-shirts, drinkware, magnets, keychains and many more Enid souvenirs decorated with the Enid logo. Come see us at 201 W Garriott.



» SAVE TIME » SAVE MONEY » SHOP ENID

**garfield**  
FURNITURE  
*Mattresses Too*

garfieldfurniture.com



RECLINERS • MATTRESSES • ACCESSORIES  
Corners of Maine & Grand - Downtown Enid

222 W. RANDOLPH IN DOWNTOWN ENID



UNEXPECTEDLY  
**AWESOME**  
GIFTS, APPAREL  
& ACCESSORIES



WWW.THEFELTBIRD.COM

"HELPING YOU TO CREATE MEMORIES THAT LAST A LIFETIME"



CHRISTMAS  
TREE FARM  
AND SEASONAL  
EVENTS



8812 NORTH HIGHWAY 81 ENID, OK | 580-448-0210  
WWW.REDBIRDFARMENID.COM



*the boho teepee*

on the downtown square  
114 N Independence  
(580) 977-8233

FB: thebohoteepeellc  
IG: bohoteepee





# Lodging

## DOWNTOWN

- 1 GLO ENID OK DOWNTOWN/CONVENTION CENTER**  
123 W Maine / 580.540.4172  
96 ROOMS, MR, C.BR, P, WIFI

## HWY 412 / OWEN K GARRIOTT RD

- 2 BAYMONT INN & SUITES**  
3614 W Garriott | 580.234.6800  
60 ROOMS, MR, C.BR, P, PET, WIFI
- 3 CANDLEWOOD SUITES**  
1225 E Garriott | 580.234.2000  
81 ROOMS, MR, PET, WIFI
- 4 COUNTRY INN & SUITES**  
710 Mill Run | 580.540.4351  
77 ROOMS, MR, C.BR, P, WIFI
- 5 HAMPTON INN & SUITES**  
511 Demla Court | 580.234.4600  
78 ROOMS, MR, C.BR, P, WIFI
- 6 HOLIDAY INN EXPRESS**  
4702 W Garriott | 580.237.7722  
78 ROOMS, MR, C.BR, P, WIFI
- 7 HOME AWAY SUITES**  
5103 W Garriott | 580.234.5750  
80 ROOMS, MR, PET, WIFI
- 8 LAQUINTA INN & SUITES**  
4914 W Garriott | 580.233.7100  
70 ROOMS, MR, C.BR, P, PET, WIFI
- 9 RAMADA INN**  
3005 W Garriott | 580.234.0440  
123 ROOMS, MR, R, P, PET, WIFI
- 10 SPRINGHILL SUITES**  
5815 KL Drive | 580.540.4256  
88 ROOMS, MR, C.BR, P, WIFI
- 11 SUPER 8**  
2713 W Garriott | 580.242.6100  
40 ROOMS, C.BR, WIFI

## HWY 81 / VAN BUREN AVE

- 12 ECONO LODGE**  
2523 Mercer Drive | 580.237.3090  
69 ROOMS, C.BR, PET, WIFI
- 13 OYO HOTEL**  
2818 S Van Buren | 580.242.7110  
98 ROOMS, MR, P, PET, WIFI
- 14 HEARTLAND LODGE EXTENDED STAY**  
3209 S Van Buren | 580.540.9285  
20 ROOMS, WIFI
- 15 ENID INN**  
2901 S Van Buren | 580.237.6000  
90 ROOMS, MR, C.BR, P, PET, WIFI
- 16 LAZY H MOTEL**  
1610 S Van Buren | 580.237.5270  
26 ROOMS, MR, P, PET, WIFI
- 17 TRAIL MOTEL**  
701 S Van Buren | 580.234.3142  
54 ROOMS, MR, P, PET, WIFI
- 18 WESTERN INN & SUITES**  
210 N Van Buren | 580.234.1200  
72 ROOMS, MR, C.BR, P, WIFI


## RV PARKS

- 19 ASHLEY LANE RV PARK**  
2730 N Van Buren | 580.234.1246
- 20 CHISHOLM TRAIL EXPO CENTER**  
111 W Purdue | 580.237.0238
- 21 ENID RV PARK**  
1002 E Maine | 580.540.8875
- 22 FAIRHAVEN RV PARK**  
4420 N 4th St. | 580.234.4415
- 23 HIGH POINT MOBILE HOME & RV**  
2700 N Van Buren | 580.234.1726
- 24 ROSE RV**  
1418 S Van Buren | 580.237.9405
- 25 SHADY LANE RV PARK**  
4112 Shady Lane | 580.603.2870
- 26 TRAILS WEST**  
902 Overland Trail | 580.237.7094

### KEY

MR	Meeting Room
R	Restaurant
C.BR	Comp. Breakfast
P	Pool
PET	Pets
WIFI	Free WIFI





**R**AZZMATAZZ  
Ladies Fashions with  
Brighton Accessories

2308 W. WILLOW  
ENID, OK 73703

PHONE  
580-242-2100

Facebook icon | razz1@att.net



Join us often for great food  
and fantastic service  
in our locally owned,  
Italian family restaurant.

VOTED  
Your Favorite *Italian!*  
-grazie



225 S. Grand Street, Enid OK • (580) 237-8464 • Dine-in • Carryout • Catering



Free WiFi  
Complimentary  
Hot Breakfast  
Indoor Pool



**Holiday Inn Express & Suites (Hwy 412)**

4702 W. Owen K. Garriott Rd., Enid, OK 73703  
Phone: 580-237-7722 | [www.hiexpress.com/enidok](http://www.hiexpress.com/enidok)

**TASTE  
THE WEST!**

AN OLD-WEST EXPERIENCE IN A FAMILY ATMOSPHERE



**OPENING  
SOON!**

BRINGING YOU  
GREAT BEEF,  
CHICKEN, PORK  
SEAFOOD, AND  
PASTA.

112 E. CHEROKEE AVE | ENID, OK

CONNECT  
WITH US

Instagram icon Facebook icon



# RESTAURANTS

Underline = local restaurants

## AMERICAN

**Barnstormers Restaurant**, 1026 S 66th St. (Woodring Airport), 580.234.9913, fb.com/EnidBarnstormers, Mon-Fri 7a-2p

**Boomarang Diner**, 226 W Randolph, 580.540.4255

**Boomarang Diner**, 721 S Oakwood, 580.297.5173

**Buffalo Wild Wings**, 2126 N Van Buren, 580.237.9453

**Cherokee Ranch Land & Cattle Company**, 112 E Cherokee, CherokeeRanchEnid.com, Mon-Thurs 11a-10p, Fri-Sat 11a-11p, Sun 10a-2p (Brunch Buffet Only).

**Chick-fil-A**, 4329 W Owen K Garriott, 580.234.9801

**Chili's Grill & Bar**, 3620 W Owen K Garriott, 580.237.2035

**Five Guys**, 4334 W Owen K Garriott, 580.307.6484

**IHOP**, 4125 W Owen K Garriott, 580.237.8999

**Jimmy's Egg**, 2126 N Van Buren, 580.234.5160

**JT's**, 5134 W Owen K Garriott (inside Jiffy Trip), 580.453.3199

**Jumbo Foods East Deli**, 221 S 30th St., 580.237.9700,

Mon-Sat 10:30a-7p

**Jumbo Foods West Deli**, 2311 W Willow, 580.233.4945,

Mon-Sun 10a-8p

**Katy's Pantry**, 2302 W Willow, 580.233.1304, katyspantry.com  
Mon-Sat 8a-6p

**Lenox Drive In**, 1110 N Grand, 580.237.8365, fb.com/Lenox.DriveIn,  
Mon-Fri 10:30a-6p, Sat 10:30a-4p

**Lotta Burger**, 310 W Willow, 580.237.1471, fb.com/LotABurgerEnid,  
Mon-Sat 11a-8p

**McAlister's Deli**, 1515 W Owen K Garriott, 580.234.3322

**PR Golf & Grill**, (Pheasant Run Golf Course) 1702 Clubhouse Dr.,  
580.242.1761, Sun-Thurs 9a-9p, Fri-Sat 9a-12a

**The Flamingo**, 520 S Van Buren, 580.234.9006,  
fb.com/theflamingoenid, Mon-Sat 11a-10p

**The Shack**, 1122 Trails West Loop, 580.324.4301,  
fb.com/theshackhamburgers, Mon-Fri 11a-8p, Tue-Thurs 11a-4p.

**The Square Nutrition & Energy**, 122 N Independence,  
580.216.8782, fb.com/TheSquareNutrition,  
Mon-Fri 6:30a-6p, Sat 7a-2p

**Tropical Smoothie Cafe**, 501 S Van Buren, 580.237.3983

**Wee Too**, 4002 N 4th St., 580.233.4663, Mon-Sun 6a-2p

**Wings to Go**, 2316 W Owen K Garriott, 580.237.9464,  
Sun-Thurs 11a-10p; Fri-Sat 11a-11p

**Wingstop**, 3514 W Owen K Garriott, 580.324.8500

**Wooden Nickel**, 3005 W Owen K Garriott (inside Ramada Inn),  
580.237.5554, fb.com/woodennickelbbq,  
Mon-Sat 6a-8p, Sun 6a-2p

**Youngblood Grille**, 302 N Independence, 580.540.8903,  
fb.com/YoungbloodGrille, Mon-Fri 8a-2p, 5-9p, Sat 7:30a-2p

## ASIAN

**Chen Garden**, Oakwood Mall, 4125 W Garriott, 580.540.8909

**Hibachi Express**, 432 S Van Buren, 580.297.3888, fb.com/  
HibachiEnid, Sun 11a-9p, Mon-Thurs 11a-9:30p; Fri-Sat 11a-10p

**Jade Garden**, 1935 W Owen K Garriott, 580.297.5555,  
EatJadeGardenEnid.com, Sun-Thurs 11a-9p, Fri-Sat 11a-9:30p

**Jiang Yuan**, 2201 W Willow, 580.233.8889,  
Mon-Thurs 11a-9p, Fri-Sat 11a-9:30p, Sun 11:30a-9p

**Mango Tree Café**, 1732 S Van Buren, 580.297.5106,  
fb.com/MangoTreeCafeThai, Mon-Sat 11a-8:30p

**Oriental Garden Express**, 923 S Van Buren, 580.237.8111,  
Mon-Sat 11a-7:50p

**Sula Korean Cuisine**, 1407 S Van Buren, 580.234.0700,  
fb.com/SulaKoreanCuisine, Mon-Thurs 10:30a-3p Fri 10:30a-3p & 5-9p

**Tokyo Sushi Hibachi Steak House**, 2310 W Owen K Garriott,  
580.540.2177, Mon-Thurs 11a-10p, Fri-Sat 11a-10:30p;  
Sun 12-9:30p

## BBQ

**Billy Sims BBQ**, 3518 W Owen K Garriott, 580.297.5191

**Blaze's BBQ**, 1002 W. Willow, 580.540.8941,  
BlazesBBQEnid.com, Mon-Thurs 11a-8p, Fri-Sat 11a-9p

**Rib Crib**, 4901 W Owen K Garriott, 580.237.7333

**Swadley's World Famous BBQ**, 4722 W Owen K Garriott,  
580.297.5227

## BREWERY

**Enid Brewing Company & Eatery**, 126 S Independence,  
580.297.5214, EnidBrewing.com, Wed-Thurs 11a-9p,  
Fri-Sat 11a-11p, Sun 10a-2p

**Settlers Brewing Company**, 202 E Randolph, 580.297.3014,  
fb.com/SettlersBrewingCo, Wed-Thurs 4-10p, Fri 4-11p,  
Sat 2-11p, Sun 2-6p

## CAJUN

**Nebow's Cajun Food**, 4125 W Owen K Garriott (Oakwood Mall  
Food Court), 580.297.3156, fb.com/NebowsCajunFood,  
Tues-Sat 11a-8p, Sun 12-6p

## COFFEEHOUSE

**Davinci's Coffeehouse & Gelateria**, 2315 W Willow,  
580.234.2080, Mon 6:30a-5p, Tues-Sat 6:30a-9p, Sun 8a-5p

**Davinci's Coffeehouse & Gelateria Central**, 525 S Arthur,  
580.297.4204, Mon-Sat 5:30a-10p, Sun 7a-8p

**Davinci's Coffeehouse & Gelateria South**, 813 S Van Buren,  
580.297.5507, drive-thru hours Mon-Fri 6a-9p, Sat 7a-9p,  
Sun 8a-5p; lobby hours Mon-Sat 7a-9p, Sun 8a-5p

**Farmhouse Fresh Coffee Shop & Deli**, 717 S Hoover,  
580.231.7473, fb.com/farmhousefresh1, Mon-Fri 7a-4p, Sat 7a-2p

**Five80 Coffeehouse & Copper Tap Roasting Co.**, 122 E  
Randolph, 580.233.3483, fb.com/Five80Coffeehouse,  
Mon-Fri 6:30 am-4 pm, Sat 6:30 am-2 pm

**Starbucks**, 2326 W Owen K Garriott, 580.234.3726

## DELI SANDWICHES

**Jimmy John's**, 2312 W Owen K Garriott, 580.540.9183

**Schlotzsky's**, 5229 W Owen K Garriott, 580.234.5059

**Subway**, 2333 W Willow, 580.242.6760

**Subway**, 515 S Van Buren, 580.242.0400

**Subway**, 5601 W Owen K Garriott, 580.237.7330,

**Subway** (Thunder Travel Plaza), 106 S 42nd St., 580.701.2320

## DONUTS

**Dandy's Donuts, Deli & Delights**, 2510 W Chestnut,  
580.234.5681, DandysDonuts.com,  
fb.com/dandysdonutsdelidelights Mon-Sun 5a-2p

**Daylight Donuts**, 209 N Oakwood, 580.233.8017

**Daylight Donuts**, 902 W Randolph, 580.233.8032

**J's Donuts**, 1921 W Owen K Garriott, 580.237.7444,  
Tues-Sun 5a-12p  
**Paradise Donuts of Enid**, 379 E Willow, 580.237.4099  
**Winchell's Donut House**, 308 S Van Buren, 580.234.2882

## FAST FOOD

**A&W/Long John Silver's**, 309 S Van Buren, 580.237.6077  
**Arby's**, 3826 W Owen K Garriott, 580.242.6289  
**Braum's Ice Cream & Dairy Stores**, 310 W Owen K Garriott,  
580.234.8253  
**Braum's Ice Cream & Dairy Stores**, 4202 W Owen K Garriott,  
580.234.8580  
**Braum's Ice Cream & Dairy Stores**, 1121 W Willow,  
580.242.6152  
**Burger King**, 1801 N Van Buren, 580.233.5152  
**Carl's Jr.** (Love's Travel Stop), 4104 E Randolph, 580.237.1901  
**Chester's Chicken To Go**, 106 S 42nd, 580.701.2320  
**Freddy's Frozen Custard**, 624 W Owen K Garriott, 580.234.1514  
**Golden Chick**, 202 N Van Buren, 580.233.9996  
**Golden Chick**, 5601 W Owen K Garriott, 580.234-9996  
**KFC**, 3904 W Owen K Garriott, 580.242.5271  
**McDonald's**, Maine & Van Buren, 580.233.4500  
**McDonald's**, 4109 W Owen K Garriott, 580.234.6840  
**McDonald's**, 1125 W Willow, 580.234.3500  
**McDonald's** (WalMart), 5505 W Owen K Garriott, 580.213.2207  
**Popeye's Louisiana Kitchen**, 4015 W Owen K Garriott,  
580.297.5337  
**Sonic**, 1617 S Van Buren, 580.234.2311  
**Sonic**, 905 W Willow, 580.233.8611  
**Sonic**, 4913 W Owen K Garriott, 580.233.9100  
**Sonic**, 1502 E Owen K Garriott, 580.237.9500  
**Taco Bell**, 402 S Van Buren, 580.234.5849  
**Taco Mayo**, 118 N Van Buren, 580.233.5014  
**Wendy's**, 1505 W Owen K Garriott, 580.366.4915

## FINE DINING

**Costello's Continental Cuisine**, 610 S Cleveland, 580.234.7510,  
CostellosEnid.com, Tues-Thurs 11a-1p, 5-8p; Fri 11a-1p,  
5-9p; Sat 5-9p  
**On the Sidewalk Bar & Grill**, 114 W Randolph, 580.234.3050,  
onthesidewalk.net, Mon 5-9:30p, Tues-Fri 11a-1:30p,  
5-9:30p, Sat. 5-9:30p  
**Panevino Wine & Steak**, 124 W Randolph, 580.237.8488,  
PanevinoWineBar.com, Wed-Thurs 5-10p, Fri-Sat 5-11p

## IRISH PUB

**Callahan's Pub & Grille**, 220 N Independence, 580.242.7299,  
CallahansPublicHouse.com, Mon-Thurs 11a-10p,  
Fri-Sat 11a-11p, must be 21 to enter

## ITALIAN

**Napoli's Italian Restaurant**, 225 S Grand, 580.237.8464,  
NapolisOfEnid.com, Sun, Tues-Thurs 11a-9p; Fri-Sat 11a-10p

## MEXICAN

**Café Garcia**, 324 S Grand, 580.237.4775, fb.com/cafegarciaok  
Mon-Sat 11a-9p, Sun 11a-3p  
**El Carnitas Mexican Grill**, 217 E Owen K Garriott, 580.297.5175,  
Tues-Fri 11a-8p, Sat 10:30a-8p, Sun 10a-4p

**El Charro**, 1716 S Van Buren (inside Save-A-Lot), 580.402.6393,  
Mon-Sun 11a-9p  
**El Patio Mexican Grill**, 4410 W Owen K Garriott, 580.297.5279  
**Frida's Antojos**, 115 E Maine, 580.540.3172, fb.com/FridasAntojos,  
Tues-Fri 11a-8:30p, Sat-Sun 10a-6p  
**La Fiesta Mexican Café**, 2709 W Owen K Garriott, 580.242.1200,  
LaFiestaMexicanCafe.com, Mon-Thurs 11a-9p, Fri-Sat  
11a-10p, Sun 11a-4p  
**Mama Tita's Mexican Tacos** (carryout only), 610 S Cleveland,  
580.234.5633, fb.com/MamaTitas, Mon-Sun 10a-9p  
**Marisco Los Primos**, 701 E Broadway, 580.242.1194,  
Mon-Thurs 11a-9p, Fri-Sat 10a-10p, Sun 10a-5p  
**Octavio's Taqueria**, 226 W Broadway, 580.237.5256,  
Tues-Sat 11a-7p, Sun 11a-4p  
**Playa Azul**, 2731 W Owen K Garriott, 580.242.4875,  
fb.com/PlayaAzulEnid, Mon-Thurs 11a-9p, Fri-Sat 11a-10p,  
Sun 11a-8:30p  
**Pollo Altano**, 213 W Willow, 580.234.0099,  
Mon, Wed-Sat 7a-8p; Sun 7a-3p  
**Sandy's Tacos**, 1902 N Grand, Mon-Sat 11a-7p, no phone orders  
**Taco Bandito**, 205 W Willow, 580.234.2800,  
fb.com/TacoBanditoRestaurant, Tues-Sat 10:30a-8p  
**Taco Bandito**, Oakwood Mall, 4125 W Owen K Garriott,  
580.237.1488, fb.com/TacoBanditoRestaurant,  
Tues-Sat 11a-4p

## PIZZA

**A Fuego Pizzeria**, 1518 E Broadway, 580.297.5226,  
fb.com/AFuegoPizzeria, Wed-Sat 11a-9p  
**Brick Oven Pizzeria & Pub**, 2701 Rock Island Blvd.,  
580.297.5286, fb.com/TheBrickOvenEnid, Mon-Sat 11a-9p  
**Domino's**, 1119 S Van Buren, 580.242.2004  
**Domino's**, 1129 W Willow, 580.297.5310  
**Godfather's**, 2101 W Owen K Garriott, 580.233.5766  
**Hunt Brothers Pizza**, 106 S 42nd St., 580.701.2320  
**Little Caesar's**, 2404 W Owen K Garriott, 580.237.3322  
**Marco's Pizza**, 2321 W Willow, 580.701.6765  
**Mazzio's**, 4905 W Owen K Garriott, 580.234.1558  
**Papa John's**, 4330 W Owen K Garriott, 580.233.2100  
**Papa Murphy's**, 204 S Van Buren, 580.237.1037  
**Pizza Hut/Wing Street**, 130 N Oakwood, 580.233.8943  
**Pizza Hut/Wing Street**, 905 E Broadway, 580.237.7710

## STEAKHOUSE

**Colton's Steak House**, 707 S Cleveland, 580.461.2658  
**Land Run Steakhouse**, 3710 W Owen K Garriott Rd,  
580.297.5060, LandRunSteakhouseOfEnid.com,  
Mon-Sat 11a-10p

## SWEETS

**The Pastry Nook Bakery & Bistro**, 230 W Randolph,  
580.402.1909, fb.com/ThePastryNookBakeryAndBistro,  
Mon-Sat 8a-4p



# THINGS TO DO

## Arts & Culture

( ) = coordinates for maps  
on pages 24-26

### ART GALLERIES

**KLEMM/Art (DT A5)** – 222 E Maple Suite 700, 580.234.8284. Enid native Mike Klemme has traveled internationally photographing golf courses and a wide range of natural subjects. His work is highlighted here, along with pieces by guest regional artists.

**Courthouse Murals (DT C3)** – 114 W Broadway – See this fascinating depiction of the region from before white men lived on the Plains through the Great Land Run of 1893. Ruth Monro Augur painted the murals in the late 1930s and they are as vibrant today as the day she painted them.

**Holden Art Gallery (DT C3)** – 128 N Independence, 580.233.6300, HHolden.com – Call ahead to reserve a time to see the works of this Hall of Fame Western artist.

### HISTORICAL MUSEUMS/LOCATIONS

**Cherokee Strip Regional Heritage Center (F9)** – 507 S 4th, 580.237.1907, CSRHC.org – This Smithsonian-quality museum tells the story of the Great Land Run of 1893 and how Enid has developed into the city it is today. Also on the grounds is Humphrey Heritage Village, a collection of four historically-significant buildings, including the only remaining U.S. Land Office from any of the seven Oklahoma land runs. Admission \$7 for adults, \$5 for seniors, \$4 for students. Open Tues-Sat 10a-5p.

**John Wilkes Booth Conspiracy (DT E4)** – Garfield Furniture, 205 S Grand, 580.237.5032, GarfieldFurniture.com/History – History books say Booth was killed in a barn in Virginia two weeks after he assassinated President Lincoln. But was he? Learn the story of David E. George, who 38 years after the assassination claimed on his deathbed at the Grand Ave. Hotel (now Garfield Furniture) that he was really Booth. Open Mon-Fri 9a-6p, Sat 10a-5p.

**Simpson's Old Time Museum (DT B5)** – 228 E Randolph, 580.234.4998, SkeletonCreekProductions.com – Come see where Western movies are made. The Simpson brothers have filmed six family-friendly Western movies using the nine movie sets inside this old mercantile store. Sets include a jail, saloon, hotel lobby, church and more. Open Tues-Sat 8a-11a, 1p-4p.

**Railroad Museum of Oklahoma (D7)** – 702 N Washington, 580.233.3051, RailroadMuseumOfOklahoma.com – See one of the largest collections of railroad memorabilia in the nation, including model railroads, dining car china, depot clocks and more. Step into the rail yard and climb through cabooses, engines and dining cars. Admission \$5. Open Tues-Fri 1p-4p, Sat 9a-4p.

P6

## Putnam Six

Books • People • Community

---

610 S. Cleveland St., Suite 212, Enid, OK  
580-297-5089 PutnamSixBookstore

*A great place to browse and hang out!*



LARGE  
SELECTION OF  
CHILDREN'S  
BOOKS

NEWEST  
RELEASES & BEST  
SELLERS  
(ADULT BOOKS)



4RkIDS

mini golf course

## COME PLAY WITH US!

**4RKIDS MINI GOLF**

**710 OVERLAND TRAIL, ENID, OK 73703**

**(580) 237-7888**

**4RKIDSMINIGOLF.COM**



Chick-fil-A®



4329 W. Owen K. Garriott Rd.

Enid OK 73703

**Literary Landmark: Marquis James (DT D3)** – Enid Public Library, 120 W Maine, 580.234.6313, [Enid.okpls.org](http://Enid.okpls.org) – The Enid Public Library is one of 13 Literary Landmark locations in Oklahoma, recognizing the work of two-time Pulitzer Prize-winning author Marquis James who came to Enid with his family at age 2 during the Great Land Run of 1893. Open Mon-Thurs 9a-7p, Fri-Sat 9a-6p.

**Woodring Wall of Honor & Veterans Park (E12)**– Woodring Regional Airport, 1026 S 66th, 580.233.4530, [WoodringWallOfHonor.com](http://WoodringWallOfHonor.com) – An 80-percent replica of the Vietnam Veterans Memorial Wall in Washington D.C. was dedicated on Veterans Day 2013 as Oklahoma's Official Vietnam War Memorial. Accessible 365 days a year 7 am-9 pm.

**ML Becker Learning Center (E12)**– Woodring Regional Airport, 1026 S 66th, 580.233.4530. [WoodringWallOfHonor.com](http://WoodringWallOfHonor.com) – A collection of permanent and temporary exhibits of patriotic, military and war-related memorabilia. The center won 2019 Oklahoma Museums Association award for Education and Outreach. Open Thurs-Sat 10a-4p and by special appointment.

**Vance AFB Visitors Center (I6)**– 1601 W Fox Dr., 580.213.5000, [Vance.af.mil](http://Vance.af.mil) – Aircraft used in training pilots from its inception in 1941 to today stand outside the Vance gate. Visitors are not allowed onto Vance AFB without proper military clearance.

**Midgley Museum (F6)**– 1001 Sequoyah, 580.234.7265 – It's known by the locals as the Rock House. The unique trophy room inside shows the Midgley's wild-game conquests from Africa, Alaska and more. The eclectic assortment of objects tell the story of this adventurous couple. Closed Nov. 1-March 31.

**National Register Locations** – At press time, 26 locations in Enid are listed on the National Register of Historic Places. Go to [VisitEnid.org](http://VisitEnid.org) for the complete list.

## PERFORMING ARTS

**Arts & Entertainment District** – Downtown Enid is one of seven certified cultural districts in the state as named by the Oklahoma Arts Council. Home to Gaslight Theatre, the Enid Symphony Center and various art studios and public art pieces. Enjoy live music during First Fridays April-October.

**Enid Symphony Center (DT D1)**– 301 W Broadway, 580.237.9646, [EnidSymphony.org](http://EnidSymphony.org) - Concerts radiate inside this visually-stunning hall designed to put you in the middle of 18th-century Paris.

**Gaslight Theatre (DT B3)**– 221 N Independence, 580.234.2307, [GaslightTheatre.org](http://GaslightTheatre.org) – Each season brings nine high-caliber comedies, dramas, musicals and children's theatre to the stage.



# Entertainment

## EXPERIENCES

**Skeleton Creek Productions (DT B5)**– 228 E Randolph, 580.616.7368, [SkeletonCreekProductions.com](http://SkeletonCreekProductions.com) – Groups can make their own Western micro-movie at this movie studio inside Simpson's Old Time Museum. Call for details.

**Red Bird Farm (A8)** – 8812 N U.S. Hwy. 81, 580.448.0210, [RedBirdFarmEnid.com](http://RedBirdFarmEnid.com), Enid's agritourism destination, a family-friendly working Christmas tree and blackberry farm, with special events offered throughout the year.

**Enid Escapes (A3)** – 3815 W Carrier Rd., 580.747.3858, [EnidEscapes.com](http://EnidEscapes.com) – Enid Escapes is Enid's first and only escape rooms, featuring four rooms of varying difficulty. Do you have what it takes to escape?

**Nightmare Warehouse (D7)**– 424 W Walnut, [NightmareWarehouse.com](http://NightmareWarehouse.com) – One of the top haunted houses in Oklahoma is over 7,000 square feet of terror. Open Thursday-Saturday nights in October.

## FAMILY FUN

**Leonardo's Children's Museum (DT A5)** – 200 E Maple, 580.233.2787, [Leonardos.org](http://Leonardos.org). One of the top children's museums in Oklahoma got a facelift in 2016. Highlights include the two-story Power Tower and Critter Clubhouse lets you make friends with snakes, lizards, chinchillas, ferrets and other live animals. Upstairs find a mini-Enid complete with grocery store, doctor's and dentist's offices, farmers market and art studio. All-day admission also includes Adventure Quest, the world's largest community-built outdoor playground. Open Tuesday-Saturday 12 pm-7 pm. Admission \$9.99 for everyone age 2 and older.

**4RKids Mini Golf (G3)**– 710 Overland Trail, 580.237.7888 – A challenging 18-hole ADA-accessible layout brings a whole new level of miniature golf to Enid. Open daily Memorial Day through October, and weekends November-May weather permitting.

**Skatetown (G4)**– 905 Overland Trail, 580.233.5360, [SkatetownEnid.com](http://SkatetownEnid.com) – Adults can play pickup roller hockey on Sunday nights while the entire family can skate Thursday-Sunday on the large wood floor.

**NOC Mackie Planetarium & Observatory (E11)**– NOC-Enid campus, 100 S University, 580.548.2314 – View the sky as it appears during any hour of the night of any year from any location on Earth inside one of the largest planetariums in Oklahoma. Call ahead for open times.

**Oakwood Bowl (F2)**– 4709 W Owen K Garriott, 580.233.8712, [OakwoodBowl.com](http://OakwoodBowl.com) – All 40 lanes are equipped with automated bumpers so family members of all ages can enjoy their time on the lanes.

**Splash Pads – Hoover (D9)** – 725 N 9th St., **Champion (E4)**, 3000 W Oklahoma, 580.616.7310 – Seasonal splash pads provide buckets of fun. During the summer, Hoover is open on odd-numbered days, Champion is open on even-numbered days.



**Champlin Pool (E7)**— 400 W Cherokee, 580.237.7530 — This 500,000 gallon Olympic-size swimming pool was built in 1956 and has served as a recreational hub for youth ever since.

**Meadowlake Mini Golf (H6)**— 1200 W Rupe, 580.747.3216 — Custom miniature golf course with sno-cone stand on site. Open Memorial Day through Labor Day.

**Wild Willies Waterpark (G3)**— 1122 Trails West Loop, 580.991.7770, WildWilliesWaterpark.com, Enjoy the Kiddie Cove, Kush Garden's Zinger, Drop Zone and Lazy River. Open May-September

**Enid Axe** — fb.com/EnidAxeThrowing, coming early 2021, destress and relAXE by throwing axes in a safe environment.

## MUSIC VENUES

**Stride Bank Center (DT B3)**— 302 S Grand, 580.234.1919, StrideBankCenter.com — Arena in downtown Enid plays host to concerts, sporting events and trade shows. Concerts here have included ZZ Top, The Beach Boys, Sawyer Brown, Casting Crowns and Josh Turner. Visit their website to learn about the latest concerts and events coming in 2021.

**Chisholm Trail Expo Center (A7)**— 111 W Purdue, 580.237.0238, ChisholmTrailExpo.com — A 9,000-seat facility designed to accommodate entertainment events including rodeo, sporting events and concerts. Home to two Enid Home Shows each year.

## WINERIES

**Indian Creek Village (F1)**— 42595 S 264 Rd., Ringwood (24 miles W of Enid), 580.554.9463, IndianCreekVillageWinery.net — Tour the winery, sample the wines and purchase Made in Oklahoma products. Live entertainment on many Sundays. Open Wednesday-Sunday. Also a Bed & Breakfast.

# Recreation

## CITY PARKS

**Government Springs Park North (F9)**— 509 E Oklahoma — One of Enid's first parks was a popular watering hole on the Chisholm Trail. Facilities include park shelters, walking trails and fishing docks. Dillingham Garden hosts interpretive public art, and who expects a waterfall on the prairie?

**Meadowlake Park (H6)**— 1200 W Rupe — This 110-acre park has a walking trail, 13 public shelters, new playground equipment, horeshoe pits and a dog park. All aboard the Kiwanis train during the summer, play miniature golf and don't miss riding the Ferris wheel and carousel.

**Crosslin Park (A6)**— 1520 W Oxford — Find picnic facilities, a dog park, eight lighted tennis courts, two baseball complexes, a walking/jogging trail and a pond for fishing at this large park on Enid's north side.

**Champlin Park (F6)**— 1198 Sequoyah — Located at the corner of Enid's busiest intersection (Van Buren & Garriott), it offers a paved walking path, picnic shelters, play area and large open space.

**Don Haskins Park (E9)**— 515 E Maine — Named for the Enid native and Hall of Fame basketball coach, this park features tennis courts, a lighted, all-weather Oklahoma City Thunder basketball court and a walking path.

**Enid Recreational Trails (G2-G7)**— 1231 S Cleveland — Safe and convenient facilities for walkers, joggers, bicyclists, in-line skaters and wheelchair users. Find map at VisitEnid.org.

## PUBLIC GOLF COURSES

**Meadowlake Golf Course (H6)**— 2013 W Rupe, 580.234.3080, MeadowlakeCourse.com — This tree-lined 18-hole municipal golf course measures 6,472 yards from the tips.

**Pheasant Run Golf Course (C1)**— 1702 Clubhouse Dr., 580.233.2355, PheasantRunGolfEnid.com — This 18-hole, par-72, championship links-style course measures 7,201 yards from the championship tees.

## PRIVATE GOLF COURSE

**Oakwood Country Club (C3)**— 1601 N Oakwood, 580.234.5131, occofenid.org — This 18-hole championship golf course was designed by Perry Maxwell. Its tree-lined Bermuda fairways and rolling bent-grass greens create a challenging test for all golfers.

## RECREATIONAL SPORTS

**5 Eighty Trails (H10)**— 1102 E Rupe — Enid's new singletrack mountain bike trail features seven miles of bike trails suitable for all skill levels.

**Tennis** — Enid has 20 public tennis courts, including 10 resurfaced courts at Government Springs South Park (**F9**), 1202 S 10th Street, eight lighted courts at Crosslin Park (**A6**), 1520 W Oxford, and two lighted, resurfaced courts at Don Haskins Park (**E9**), 515 E Maine.

**Meadowlake Disc Golf Course (H6)** — 1200 W Rupe, fb.com/MeadowlakeDiscGolf — Enid's newest disc golf course, this par-54 layout endorsed by three-time world champion Ron Convers Jr. features elevation, mature trees and forces shot shaping.

**NWOSU-NOC Disc Golf Course (E11)**— NWOSU-Enid, 2929 E Randolph — This 18-hole layout is tournament ready following approval by the Professional Disc Golf Association.

**Enid Skate Park (E9)** - 124 N 5th Street - Enid's new, beginner-friendly skate park featuring an open-ended bowl, flat bar and grind ledge.

**Pickleball (F9)** - Eight outdoor resurfaced pickleball courts are located at Government Springs Park South, 1202 S 10th Street.

## SPORTS VENUES

**David Allen Memorial Ballpark (DT F4)**— 301 S Grand, 580.548.0396, DavidAllenBallpark.com — One of the finest small-city ballparks in America is home to the National Junior College Athletic Association Div. II World Series. The video board beyond the centerfield fence entertains fans of all ages.

**D. Bruce Selby Stadium (G7)**— 801 W Iowa, 580.234.2407 — The premier stadium in northwest Oklahoma seats 8,760 and is home to Enid High football and soccer as well as the Tri-State Music Festival Marching Contest.

**Enid Soccer Complex (C6)**— 1520 W Poplar, 580.366.9405, EnidSoccer.com — Complex has 15 playing fields for teams of all ages and skill levels.

**Enid Speedway (B8)**, 312 E Oxford, EnidSpeedway.net. Sooner Late Models, Sooner Modified, Sooner Limited Modified, Pure Stocks and more race at this 3/8-mile oval, dirt track. Check their website for complete schedule of racing dates.

**Kellet Park (H5)**– 2491 S Cleveland, 580.234.0400 – Four lighted softball fields provide entertainment and competition for recreational and competitive softball players.

**Mabee Center (E11)**– 2401 E Maine – 580.548.2329 – Home to NOC-Enid Jets basketball.

**Stride Bank Center (DT E3)**– 302 S Grand, 580.234.1919, StrideBankCenter.com – Home to the Oklahoma Flying Aces CIF indoor football and Enid Outlaws TBL basketball teams. Other sports here include wrestling, volleyball, cheer & dance and bull riding.

## SHOPPING

**Downtown Enid** – Two-block square framed by Independence, Maine, Randolph and Grand – Find a variety of locally-owned shopping and dining in the Enid Arts & Entertainment District.

**Heritage Hills** – 2302 W Willow – Quaint, hometown shopping village featuring locally-owned specialty stores, including women's clothing stores Razzmatazz and Posh by Haylee.

**Land Run Town Center** – 4406 W Owen K Garriott – Strip mall location for chain stores Academy Sports and Outdoors, Ulta Beauty, The Buckle, Maurices and Famous Footwear.

**Neilson Square** – 3400 W Owen K Garriott – Several chains sit in this strip mall, including Old Navy, Staples and Petsense.

**Oakwood Mall** – 4125 W Owen K Garriott – Indoor shopping mall with specialty stores.

**Stonebridge Plaza** – 2510 W Chestnut – Wal-Mart Neighborhood Grocery Store is here, along with T&C Meats, Dandy's Donuts & Deli and Hotworx fitness center.

**Sunset Plaza** – 610 S Cleveland – Large strip mall featuring Hobby Lobby, Ross, Hibbett Sports, Whiskey Girlz Boutique and Putnam Six Bookstore.

**Willow Plaza** – 2311 W Willow – Find locally-owned stores like Jumbo Foods and Corks Beer Wine & Spirits and chains including Ace Hardware.

**Westgate Plaza** – 2314 W Owen K Garriott – Strip mall includes Brown's Shoe Fit and Game X Change.

## ANTIQUE & CONSIGNMENT STORES

**Broadway Antiques & Uniques** – 129 E Broadway, 580.297.5113 Three floors of antiques, décor, unique items, collectibles and upscale retail furniture treasures.

**Hope Outreach Thrift Store** – 215 S Van Buren, 580.237.7771 - Community-supported non-profit Christian ministry providing ways to help people help themselves.

**JWL Return Engagement** – 123 N Grand, 580.234.0624, JWLEnid.com - clothing, furniture & household items.

**No. 5 Findings** - 218 W Randolph, 580.278.1966 - Find vintage, repurposed furniture and home decor. Check their Facebook page for painting and creative workshops.

**Park Avenue Thrift** – 507 S Grand, 580.233.7275, ParkAvenueThrift.org - In 10 years, Park Avenue Thrift has given away over \$2M to community endeavors, turning bargain shopping and donations of great stuff into dollars for Enid's quality of life.

**Pearl Junkie Treasures** – 209 N Independence, 580.237.1500 – "Junk" stores with a variety of unique items and antiques.

**The Vintage Barn** – 1100 N Van Buren, 949.943.4305 Shabby chic boutique offering custom furniture and home décor.



## A TOUCH OF HOME

Complimentary hot breakfast, exercise room, business center, indoor pool, meeting room

710 Mill Run Rd. 580.540.4351



# Home Away Suites

## FULL KITCHENS IN EVERY ROOM!

ROOMS WITH ONE,  
TWO OR THREE BEDS

WIRED AND  
WIRELESS INTERNET

42" TV IN EVERY ROOM

BUSINESS CENTER

MEETING SPACE

WEEKLY AND MONTHLY  
RATES AVAILABLE

PH: 580.234.5750 | 5103 W Garriott, Enid

Locally Owned



VISIT [LEONARDOS.ORG](http://LEONARDOS.ORG) TO LEARN MORE  
**AND PLAN YOUR VISIT!**



**WORKING HARD EVERY DAY  
TO KEEP OUR GUESTS SAFE  
AND YOUNG MINDS INSPIRED!**



200 E. Maple Ave  
Downtown Enid Oklahoma  
(580) 233-2787

